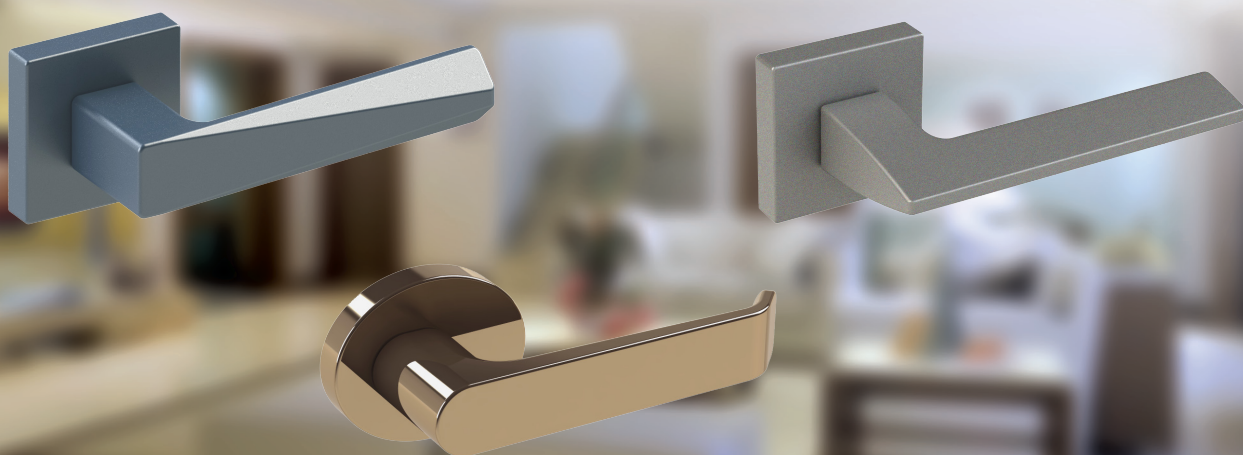


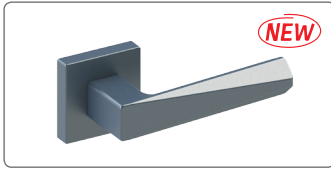
## Lever Handles And Roses



high quality lever handles

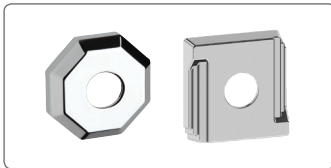


NL802-H .....	LR4	NL-J .....	LR20
NL803-L .....	LR4	NL-K .....	LR20
NL804-K .....	LR5	NL-L .....	LR20
NL805-H .....	LR5	NL-M .....	LR20
NL806-C .....	LR5	NL-N .....	LR20
NL807-P .....	LR6	NL-P .....	LR20
NL808-M .....	LR6	NL-Q .....	LR20
NL809-A .....	LR7	NL-S .....	LR20
NL810-N .....	LR7	NL Escutcheon .....	LR21
NL811-Q .....	LR7	NL-AE .....	LR21
NL812-M .....	LR8	NL-CE .....	LR21
NL813-N .....	LR8	NL-HE .....	LR21
NL814-A .....	LR9	NL-JE .....	LR21
NL815-C .....	LR9	NL-KE .....	LR21
NL816-H .....	LR9	NL-LE .....	LR21
NL817-H .....	LR10	NL-ME .....	LR21
NL818-A .....	LR10	NL-NE .....	LR21
NL819-C .....	LR11	NL-PE .....	LR21
NL820-H .....	LR11	NL-QE .....	LR21
NL821-K .....	LR11	NL-SE .....	LR21
NL822-C .....	LR12	NL Roses Dimensions .....	LR22-23
NL823-H .....	LR12	5 Series Rose & Cylinder Escutcheon for Set ....	LR24
NL825-S .....	LR13	5 Series Bracket .....	LR25
NL826-A .....	LR13	5 Series Dimensions .....	LR26
NL827-A .....	LR13	5-A .....	LR24
NL828-A .....	LR14	5-AE .....	LR24
NL829-A .....	LR14	5-H .....	LR24
NL830-M .....	LR15	5-HE .....	LR24
NL831-H .....	LR15	How to Order .....	LR27
NL832-C .....	LR15	Installation Instructions .....	LR28-30
NL Series Dimensions .....	LR16-19	Information .....	LR31-32
NL Roses .....	LR20	Finishes .....	LR33-35
NL-A .....	LR20		
NL-C .....	LR20		
NL-H .....	LR20		



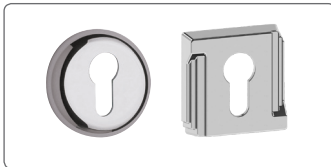
NL Series

LR4-19



Roses

LR20 & LR 22






Escutcheons

LR21



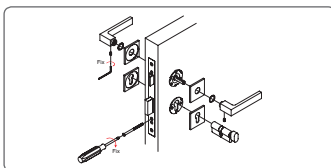
5 Series

LR24-26

Lever Set	Latch	Cylinder	Finish	Door Thickness (D/T)
			F21 Bright Chrome	50 50mm

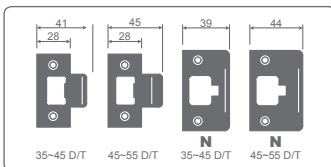
How to Order

LR27



Installation Instructions

LR28-30



Information

LR31-32



Finishes

LR33-35

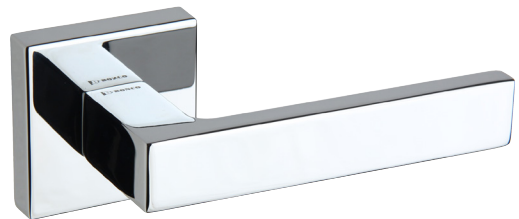
## NL SERIES

**Standard Finishes:**  
F21, F22, F91~F102,  
F91T~F108T,  
PVD (by request)

### NL802-H

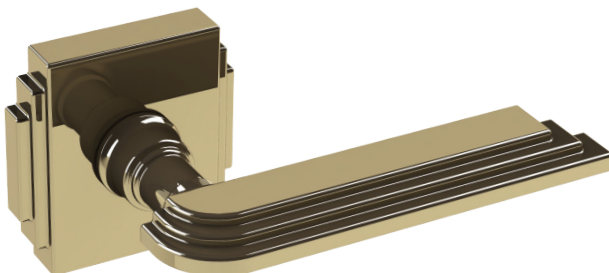


F97

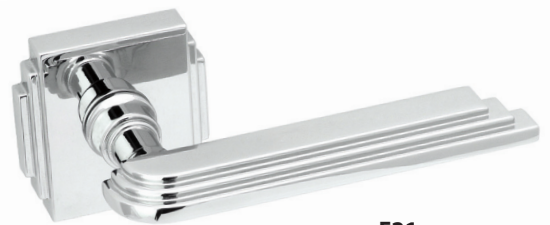


F21

### NL803-L

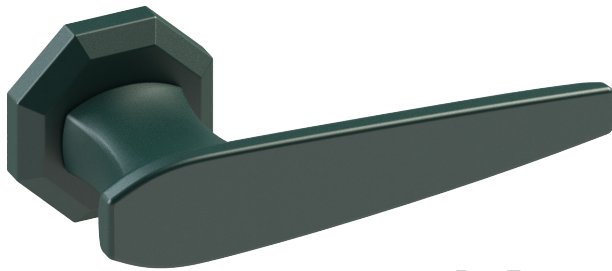


F16



F21

**NL804-K**



**F105T**



**F22**

**NL805-H**



**F91**



**F17**

**NL806-C**



**F93**



**F302**

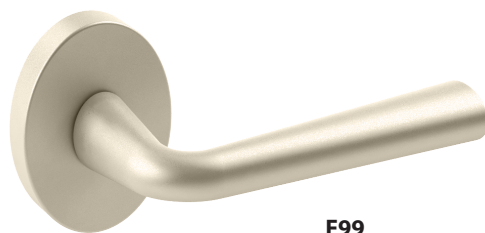
## NL SERIES

**Standard Finishes:**  
F21, F22, F91~F102,  
F91T~F108T,  
PVD (by request)

**NL807-P**



F97

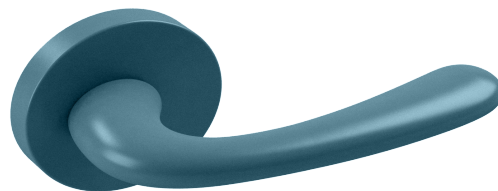


F99

**NL808-M**



F21

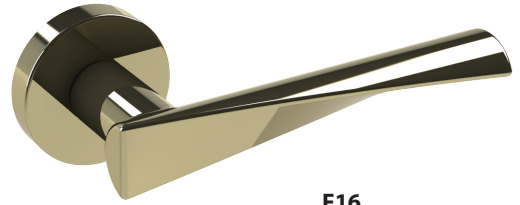


F106T

**NL809-A**

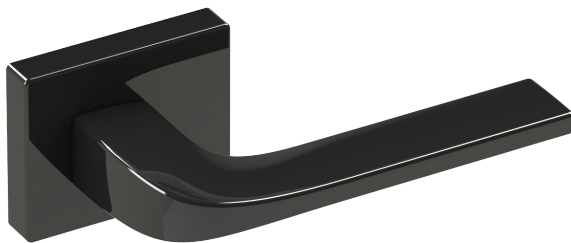


**F97**



**F16**

**NL810-N**

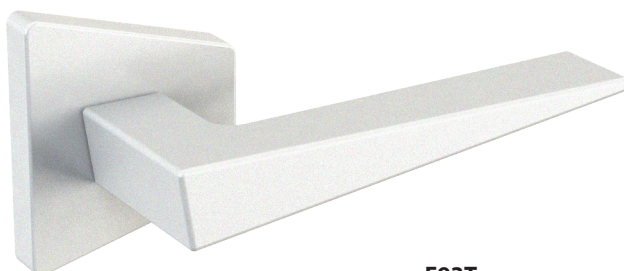


**F306**



**F22**

**NL811-Q**



**F93T**



**F21**

## NL SERIES

**Standard Finishes:**  
F21, F22, F91~F102,  
F91T~F108T,  
PVD (by request)

### NL812-M



F96T

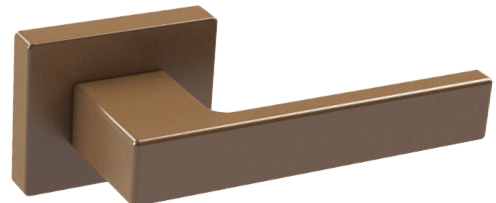


F311

### NL813-N



F21



F102



**NL814-A**



**F94T**



**F99**

**NL815-C**

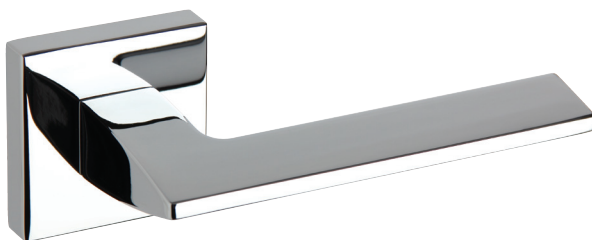


**F91**

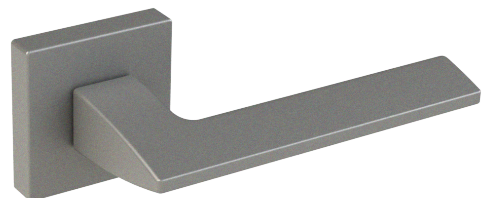


**F301**

**NL816-H**



**F21**



**F96T**

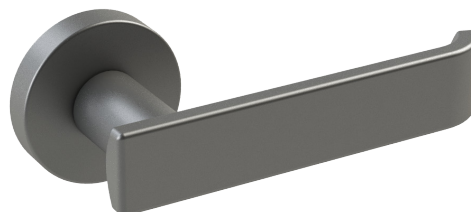
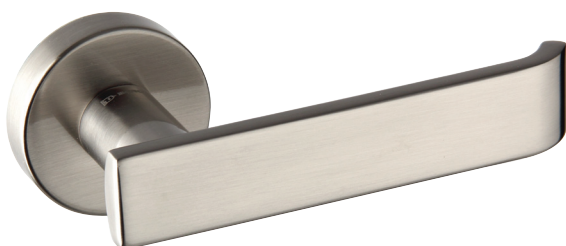
## NL SERIES

**Standard Finishes:**  
F21, F22, F91~F102,  
F91T~F108T,  
PVD (by request)

### NL817-H



### NL818-A



**NL819-C**



**F91**

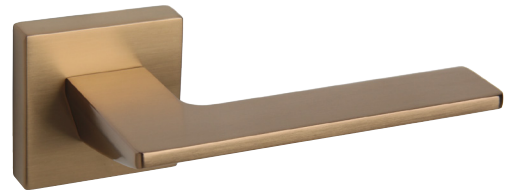


**F107T**

**NL820-H**



**F22**



**F302**

**NL821-K**



**F100**



**F304**

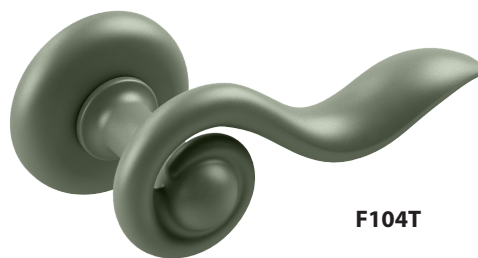
## NL SERIES

**Standard Finishes:**  
F21, F22, F91~F102,  
F91T~F108T,  
PVD (by request)

### NL822-C



F304



F104T

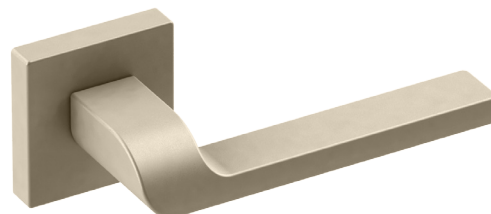
### NL823-H



Matt Dark Grey  
powder coating

Matt Light Grey powder coating

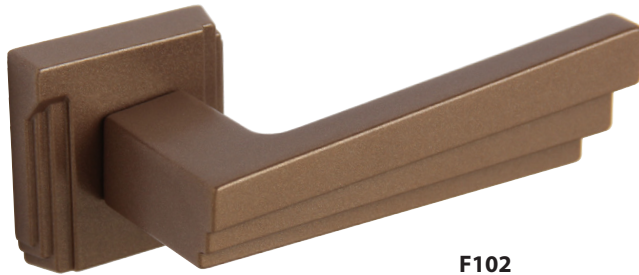
C02



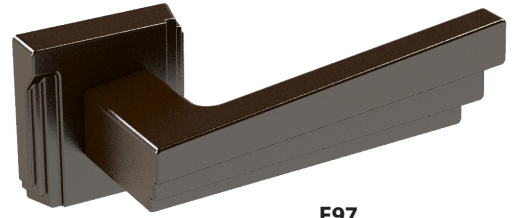
F101

**NL825-S**

This design for powder coating only

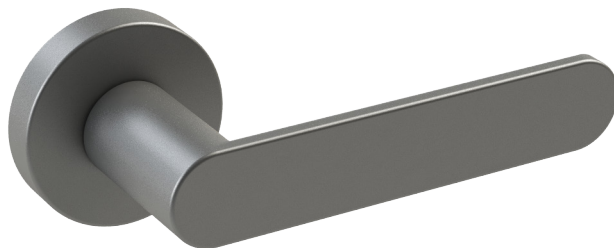


F102

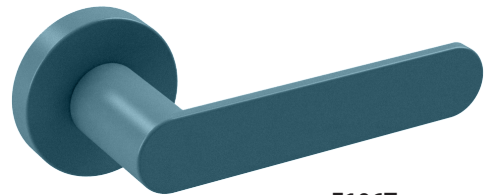


F97

**NL826-A**

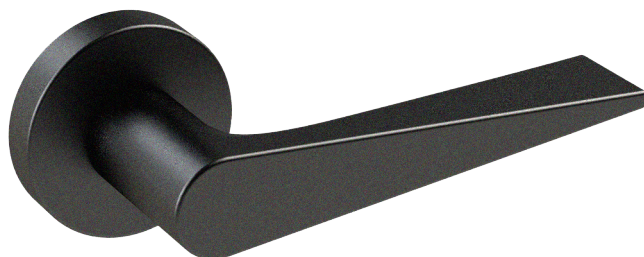


F100

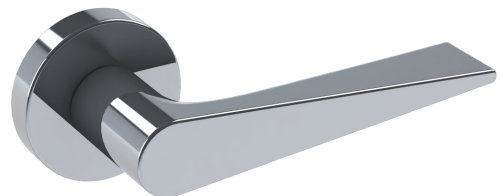


F106T

**NL827-A**



F91T

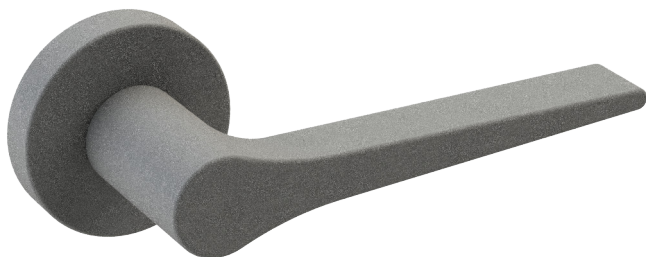


F21

## NL SERIES

**Standard Finishes:**  
F21, F22, F91~F102,  
F91T~F108T,  
PVD (by request)

### NL828-A

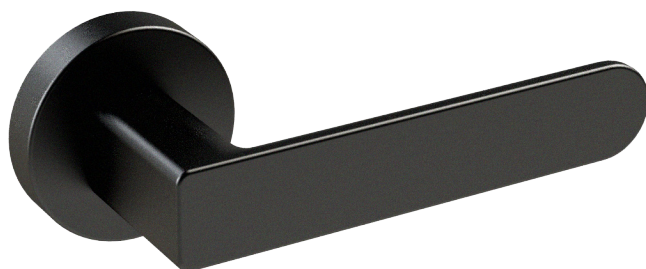


F96T

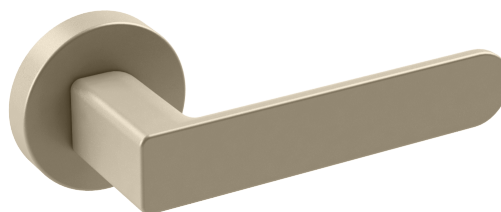


F108T

### NL829-A



F91

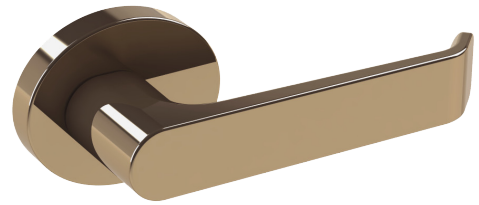


F101

NL830-M **NEW**

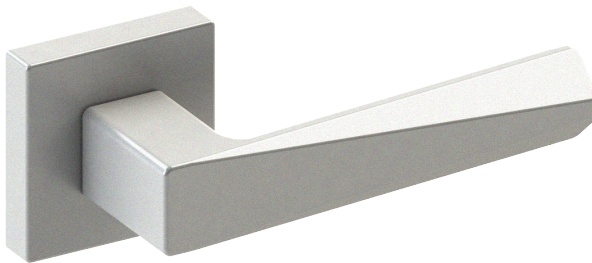


F97

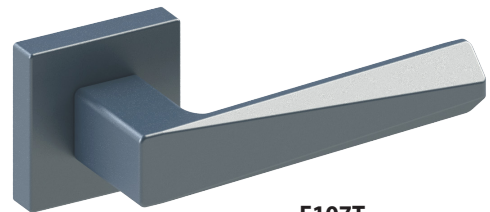


F304

NL831-H **NEW**

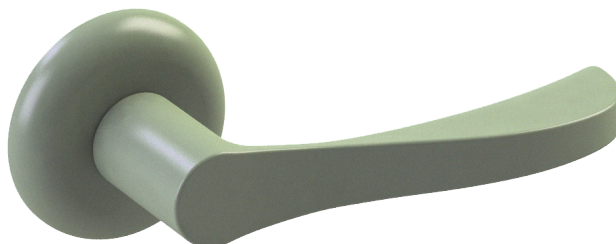


F94T



F107T

NL832-C **NEW**



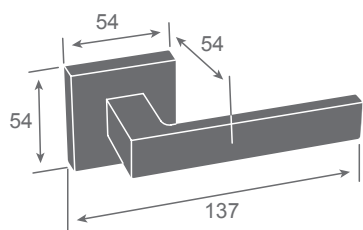
F104T



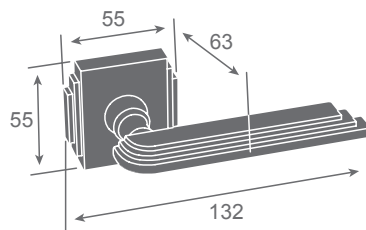
F102

# NL SERIES

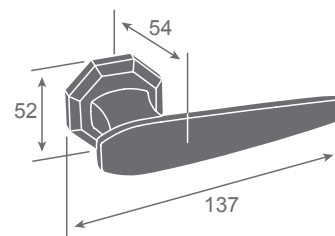
Dimensions  
in millimeters



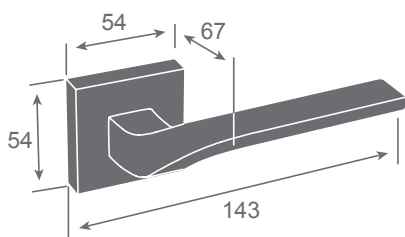
NL802-H



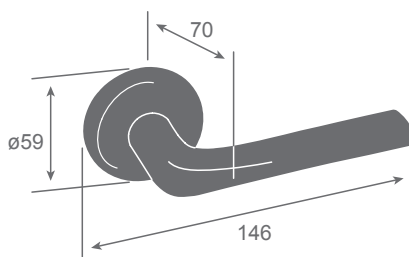
NL803-L



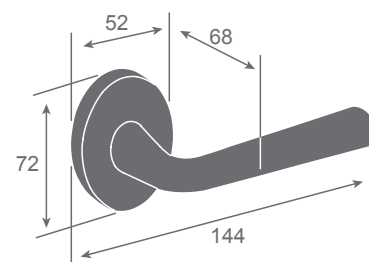
NL804-K



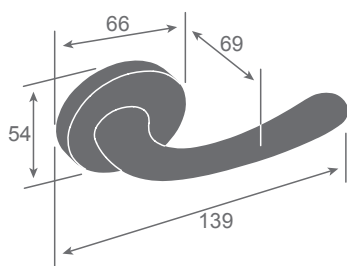
NL805-H



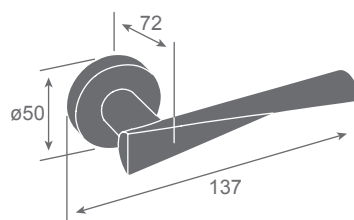
NL806-C



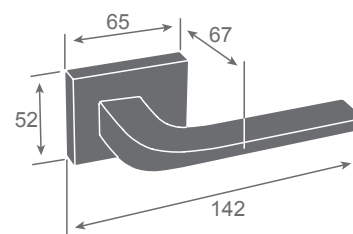
NL807-P



NL808-M



NL809-A

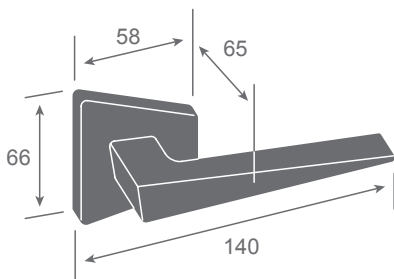


NL810-N

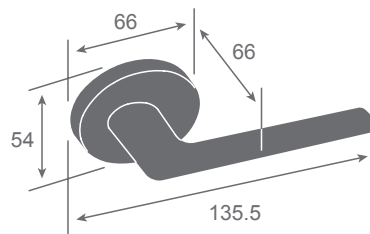


# NL SERIES

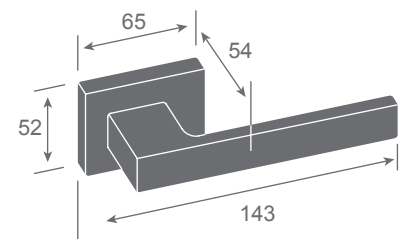
Dimensions  
in millimeters



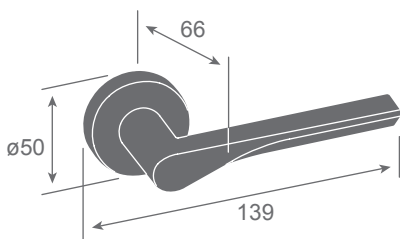
**NL811-Q**



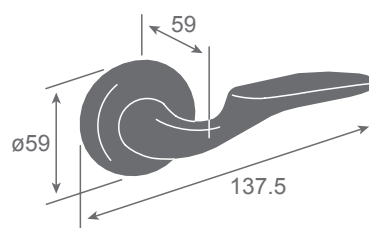
**NL812-M**



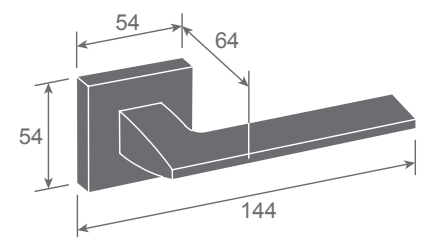
**NL813-N**



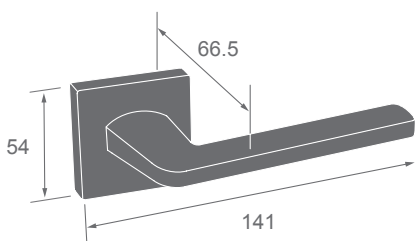
**NL814-A**



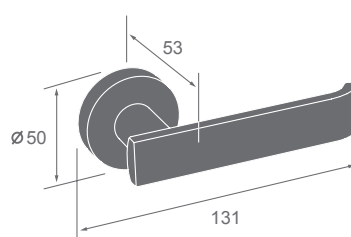
**NL815-C**



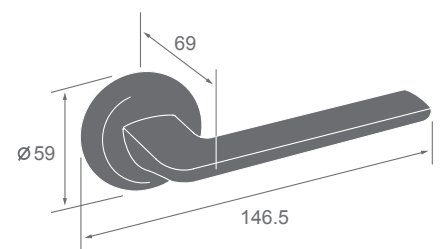
**NL816-H**



**NL817-H**



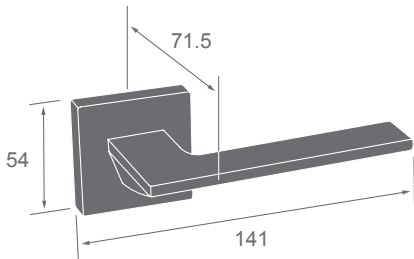
**NL818-A**



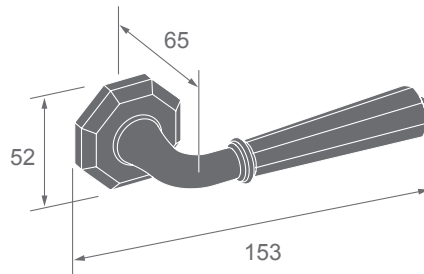
**NL819-C**

# NL SERIES

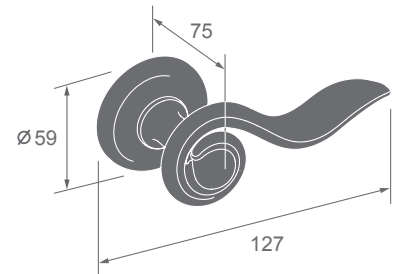
Dimensions  
in millimeters



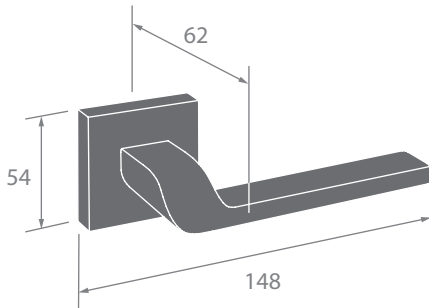
**NL820-H**



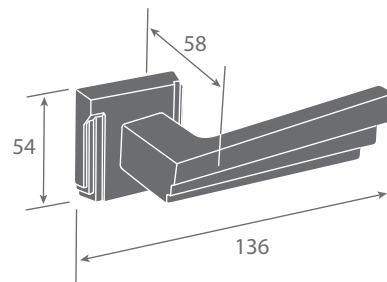
**NL821-K**



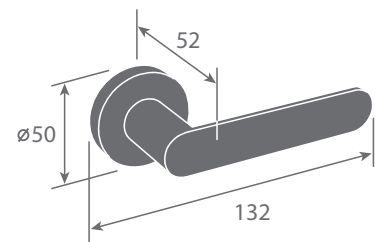
**NL822-C**



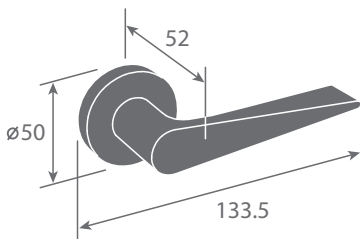
**NL823-H**



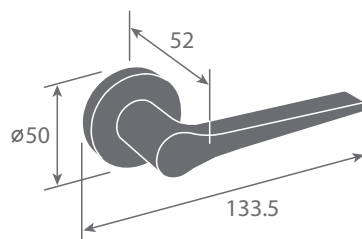
**NL825-S**



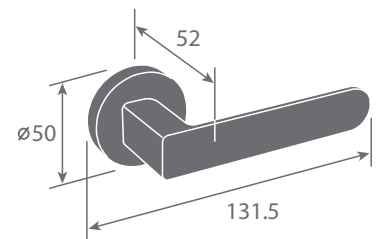
**NL826-A**



**NL827-A**



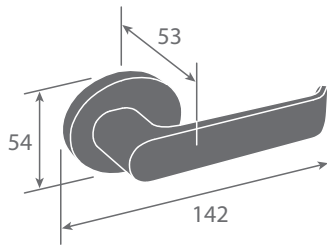
**NL828-A**



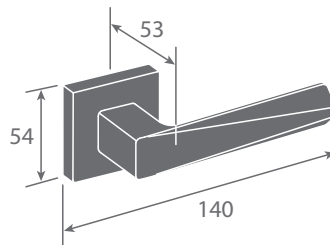
**NL829-A**

# NL SERIES

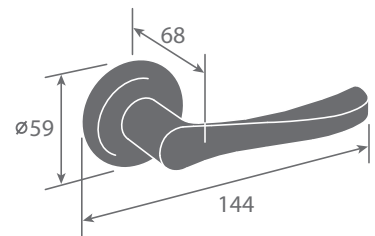
Dimensions  
in millimeters



NL830-M **NEW**



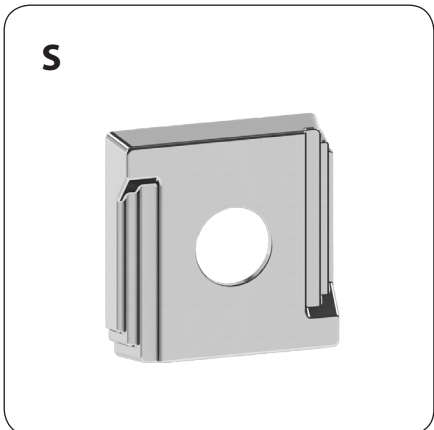
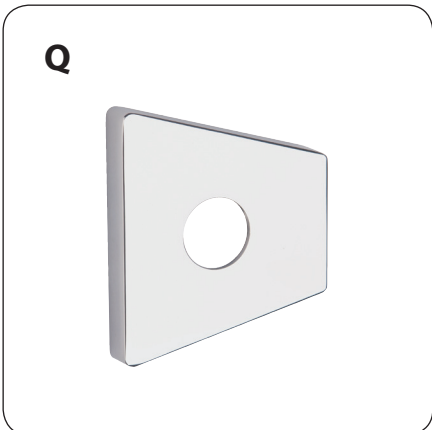
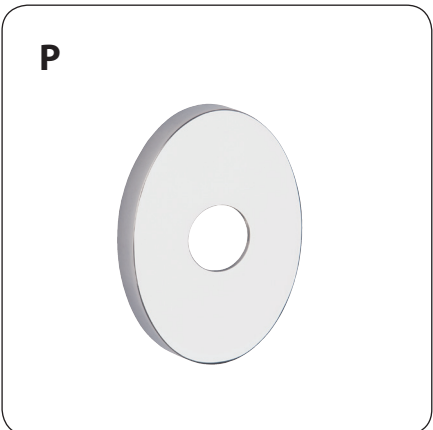
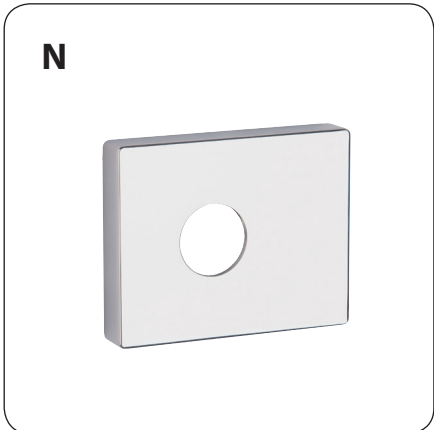
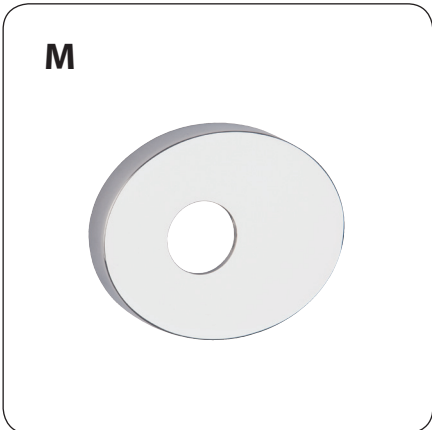
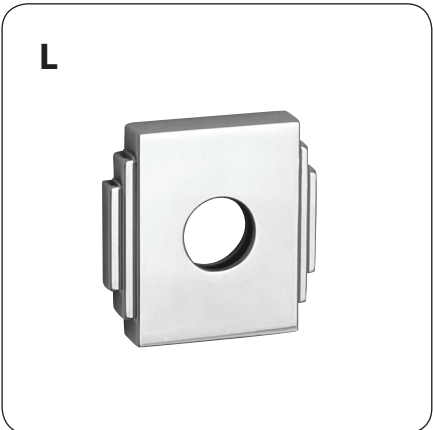
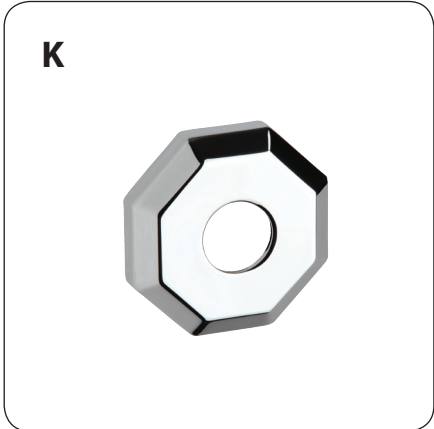
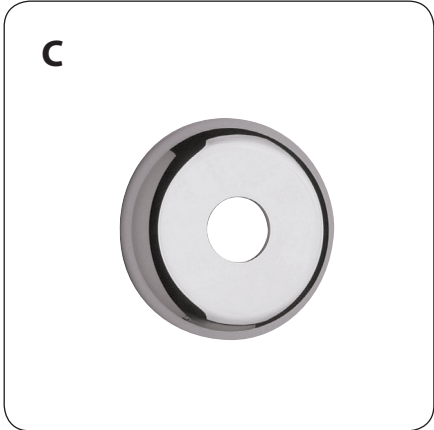
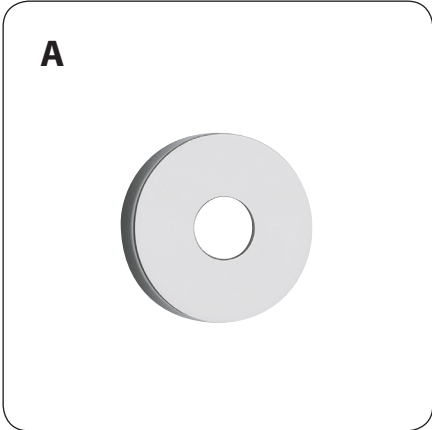
NL831-H **NEW**



NL832-C **NEW**

# NL ROSES

The trim design to be chosen from Rose design A - S



# NL ESCUTCHEONS

## Cylinder Escutcheon

The trim design to be chosen from Rose design  
AE - SE

**AE**



**CE**



**HE**



**JE**



**KE**



**LE**



**ME**



**NE**



**PE**



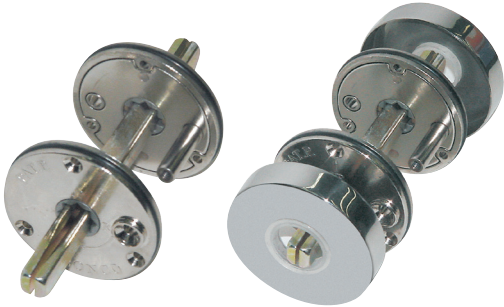
**QE**



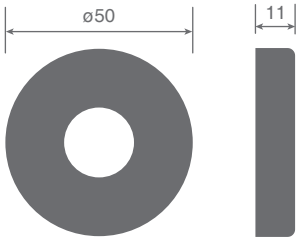
**SE**



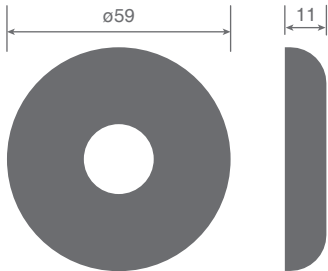
**NL ROSES**  
Dimensions  
in millimeters



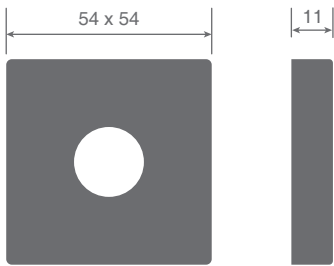
Cassette Component



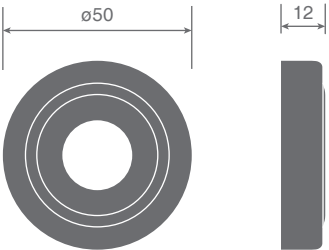
A



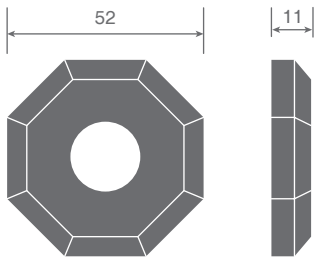
C



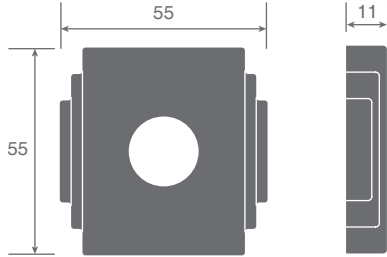
H



J



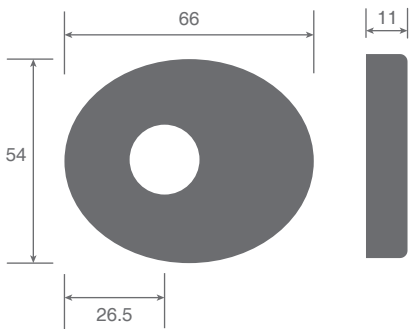
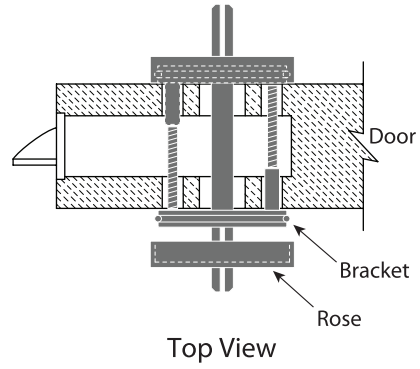
K



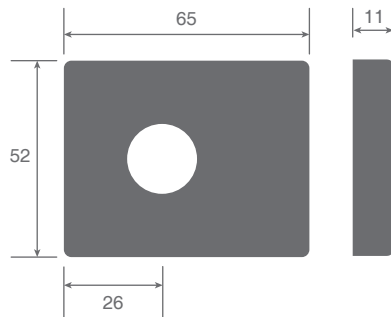
L

# NL ROSES

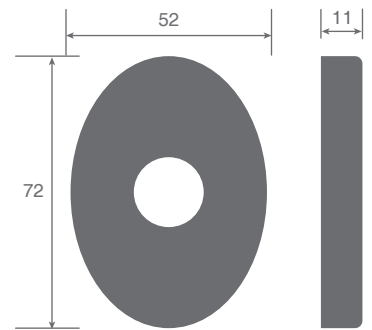
Dimensions  
in millimeters



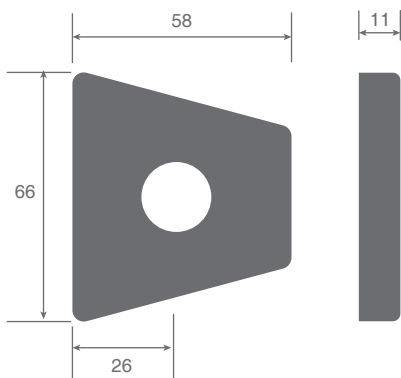
**M**



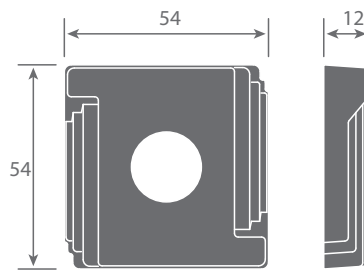
**N**



**P**



**Q**



**S**

# 5 SERIES

Rose &  
Cylinder Escutcheon



Outside



Inside



Outside



Inside



# 5 SERIES

Rose &  
Cylinder Escutcheon

Rose design A & H

## Bracket



Rose Bracket



Cylinder Escutcheon Bracket

## 5-A

Rose Cover



## 5-AE

Cylinder Escutcheon Cover



## 5-H

Rose Cover



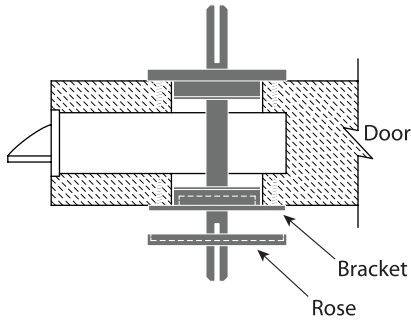
## 5-HE

Cylinder Escutcheon Cover

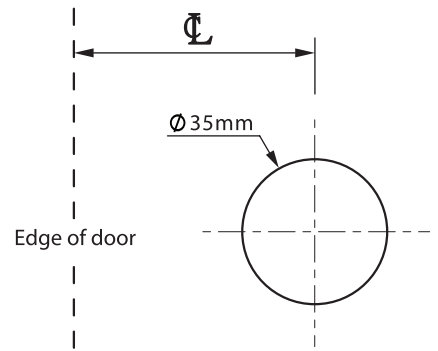


# 5 SERIES

Dimensions  
in millimeters

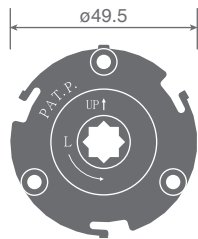
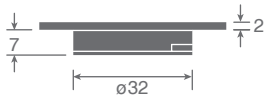


Top View

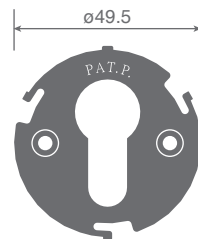


Template for 5 Series Bracket

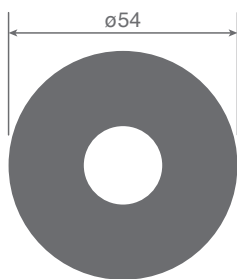
## Bracket



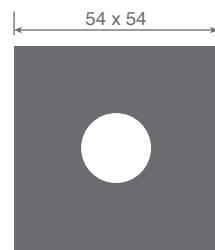
Rose



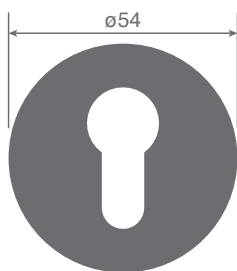
Cylinder Escutcheon



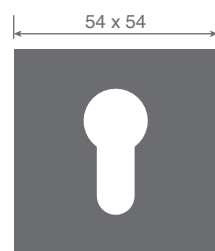
5-A



5-H



5-AE



5-HE

## How to Order

### EXAMPLE 1 : NL802-5H-5HE-4650-60-4622S-D-F21-50DT

	Lever Set	Lock	Cylinder	Finish	Door Thickness (D/T)
	<b>NL802-5H-5HE</b>	<b>4650-60</b>	<b>4622S-D</b>	<b>F21</b>	<b>50</b>
				Bright Chrome	50mm

### EXAMPLE 2 : NL808-M-5091R-60-F21-45DT

	Lever Set	Latch	Backset	Finish	Door Thickness (D/T)
	<b>NL808-M</b>	<b>5091R</b>	<b>60</b>	<b>F21</b>	<b>45</b>
			60mm	Bright Chrome	45mm

### EXAMPLE 3 : NL807-P-CLQ-05-F22-50DT

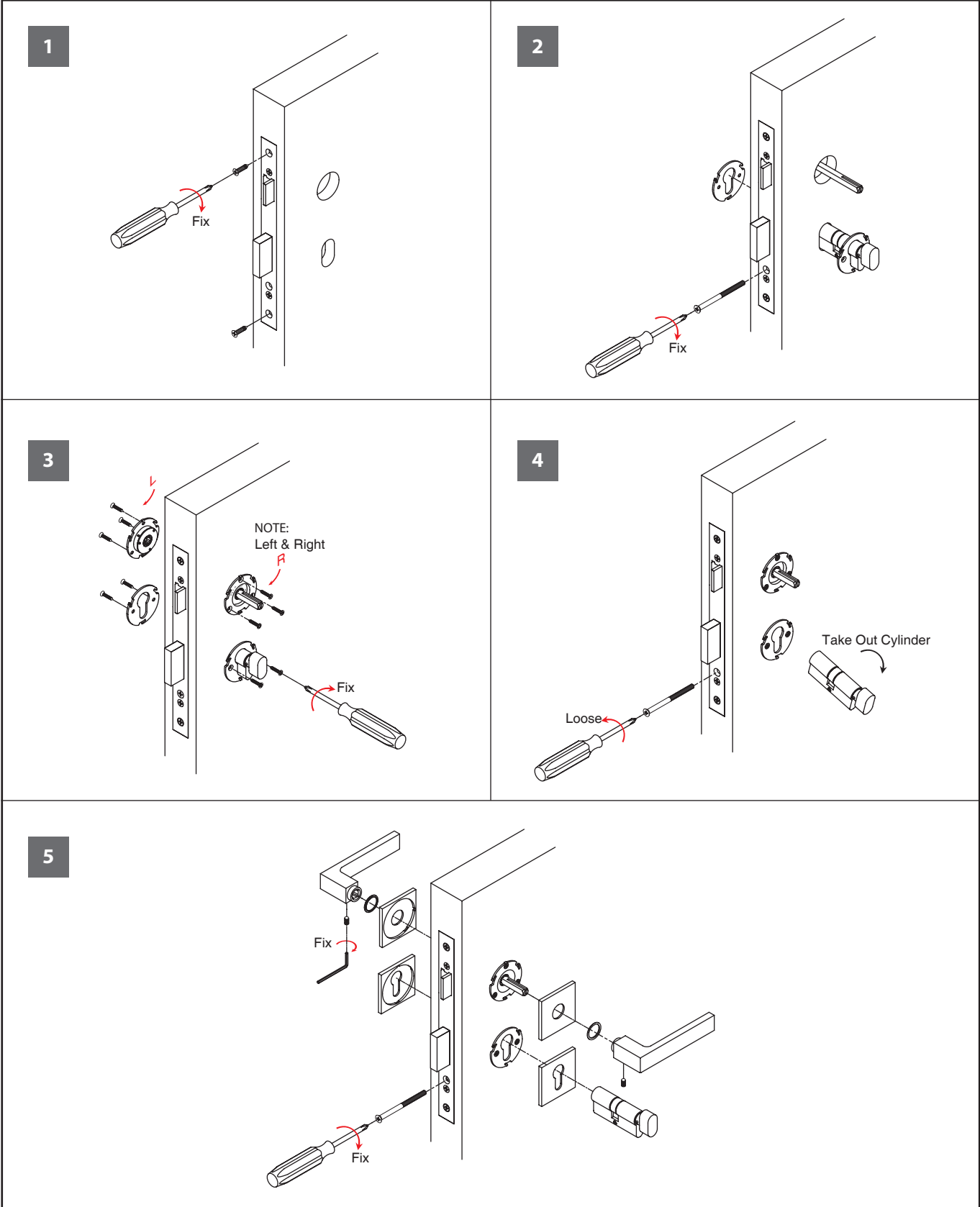
	Lever Set	Lock	Function Number	Finish	Door Thickness (D/T)
	<b>NL807-P</b>	<b>CLQ</b>	<b>05</b>	<b>F22</b>	<b>50</b>
			Entrance	Satin Nickel	50mm

### EXAMPLE 4 : NL805-H-HE-4626-70-4622S-A-F21-55DT

	Lever Set	Lock	Cylinder	Finish	Door Thickness (D/T)
	<b>NL805-H-HE</b>	<b>4626-70</b>	<b>4622S-A</b>	<b>F21</b>	<b>55</b>
				Bright Chrome	55mm

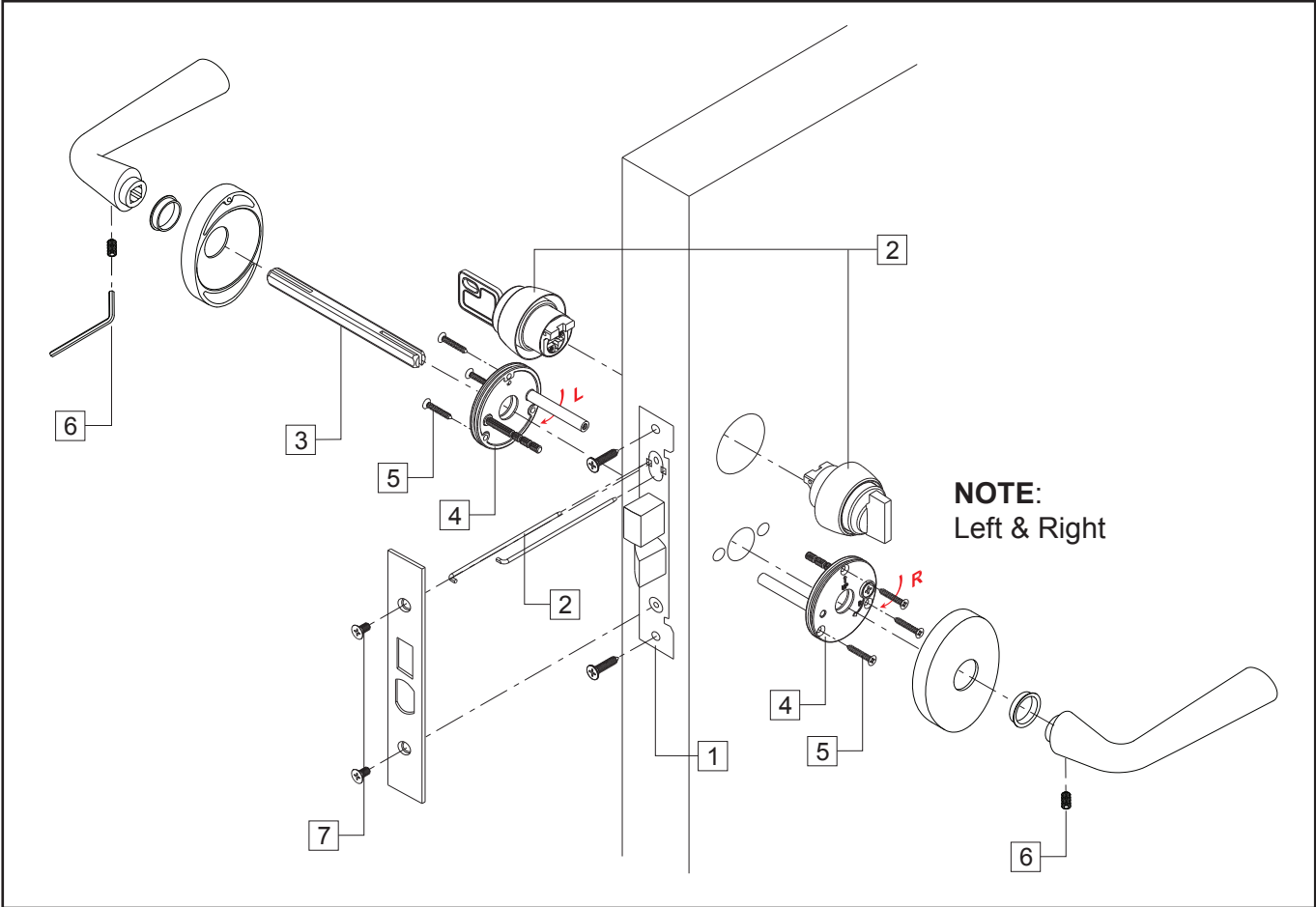
# Installation Instruction

For Example 1



# Installation Instruction

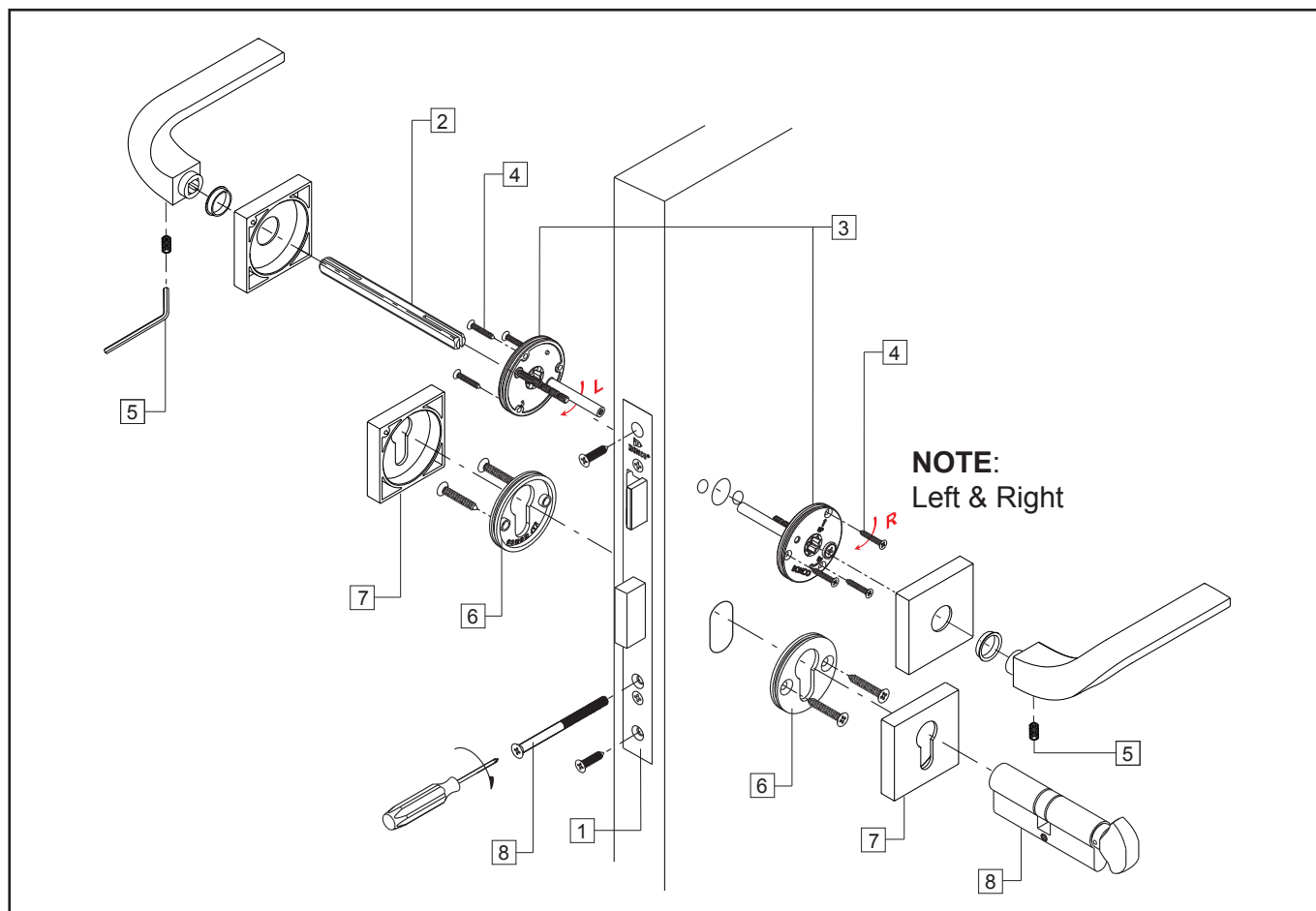
## For Example 3



1. Install the lockcase by inserting it into the cutout of the door.
2. Secure the outside cylinder and inside turn-piece to the lockcase by inserting the long retainer pins from the plate side.
3. Insert the square spindle into the hub.
4. Place the fixing brackets onto the door and fix them by tightening up two sets of (male and female screws) as shown in the diagram.
5. Reinforce and secure the fixing brackets by additional screws.
6. Secure the outside and inside lever to the fixing brackets. Tighten the levers to the square spindle with the little thread screw.
7. Finally, install the armored front.

## Installation Instruction


For Example 4



1. Install the lockcase by inserting it into the cutout of the door.
2. Insert the square spindle into the hub.
3. Place the fixing brackets onto the door and fix them by tightening up two sets of screws.
4. Reinforce and secure the fixing brackets by additional screws.
5. Secure the outside and inside lever to the fixing brackets. Tighten the levers to the square spindle with the little thread screw.
6. Place the fixing brackets onto the door and fix them by tightening up four screws.
7. Insert the cylinder through the cylinder escutcheons.
8. Finally, install the armored front.

## Information

The series below are recommended to use with **BONCO** lever handles and roses.



Series	Backset	Door Thickness	Strike Plate	Photo	Spindle
<p><b>5091SS or 5091SSN</b></p> <p><b>Spring Latch</b></p>	60&70 mm	35~55mm	 <p>35~45 D/T    45~55 D/T    35~45 D/T    45~55 D/T</p>	 <p><b>Latch:</b> Stainless Steel, Reversible <b>Face &amp; Strike Plate:</b> Stainless Steel</p>	AA
<p><b>5091E or 5091EN</b></p> <p><b>Spring Latch</b></p>	60&70 mm	35~55mm	 <p>35~45 D/T    45~55 D/T    35~45 D/T    45~55 D/T</p>	 <p><b>Latch:</b> Zinc Alloy, Reversible <b>Face &amp; Strike Plate:</b> Stainless Steel</p>	AA
<p><b>5091R or 5091RN</b></p> <p><b>Spring Latch with Spring Hub</b></p>	60&70mm	35~55mm	 <p>35~45 D/T    45~55 D/T    35~45 D/T    45~55 D/T</p>	 <p><b>Latch:</b> Stainless Steel, Reversible <b>Face &amp; Strike Plate:</b> Stainless Steel</p>	AA
<p><b>LL Series</b></p>	50mm	40~50mm			AA

# Lever Handles And Roses











Series	Backset	Door Thickness	Strike Plate	Photo	Spindle
<b>CL Series</b>	50mm	45~55 mm			AA
<b>CLQ Series</b>	70 mm	45~55 mm			AA
<b>4626 Series</b>	60&70mm	35~55mm			AA
<b>4650 Series</b>	60&70mm	35~55mm			AA
<b>4653 Series</b>	60&70mm	35~55mm			AL/AR





## Electroplate Finishes List

BONCO	Description	BONCO	Description
	<b>F21</b> Bright chrome		<b>F22</b> Satin nickel

## BPC Finishes List

BONCO	Description	BONCO	Description
	<b>F91</b> Matt black powder coating		<b>F91T</b> Matt black powder coating with rough surface
	<b>F93</b> Matt white powder coating		<b>F93T</b> Matt white powder coating with rough surface
	<b>F94T</b> Matt light grey powder coating with rough surface		<b>F96T</b> Matt dark grey powder coating with rough surface
	<b>F97</b> Matt brown powder coating		<b>F97T</b> Matt brown powder coating with rough surface
	<b>F99</b> Matt champagne silver powder coating		<b>F100</b> Matt silver grey powder coating

<b>BONCO</b>	<b>Description</b>	<b>BONCO</b>	<b>Description</b>
	<b>F100T</b> Matt silver grey powder coating with rough surface		<b>F101</b> Matt champagne gold powder coating
	<b>F102</b> Matt antique brass gold powder coating		<b>F102T</b> Matt antique brass gold powder coating with rough surface
	<b>F104T</b> Matt light green powder coating with rough surface		<b>F105T</b> Matt dark green powder coating with rough surface
	<b>F106T</b> Matt light blue powder coating with rough surface		<b>F107T</b> Matt dark blue powder coating with rough surface
	<b>F108T</b> Matt rose gold powder coating with rough surface		

 + 	<b>C02</b> Matt light / dark grey powder coating with rough surface
---	--

## PVD Finishes List

<b>BONCO</b>	Description	<b>BONCO</b>	Description
	<b>F16</b> Polished brass		<b>F17</b> Brushed brass
	<b>F301</b> Polished bronze		<b>F302</b> Brushed bronze
	<b>F303</b> Brushed chrome		<b>F304</b> Red gold
	<b>F305</b> Brushed red gold		<b>F306</b> Polished black chrome
	<b>F307</b> Brushed black chrome		<b>F308</b> Steel optic
	<b>F310</b> Polished nickel		<b>F311</b> Gold optic
	<b>F316</b> Brushed nickel		



Name of quality & dependability

[www.boncohardware.com](http://www.boncohardware.com)

**BONCO** Ironmongery Ltd.  
Member of E. Bon Holdings Ltd. (HKEx stock code 599)

---

18/F, First Commercial Building, 33 Leighton Rd., Causeway Bay, H.K.  
Tel : (852) 2891 2188 Fax : (852) 2834 2652

