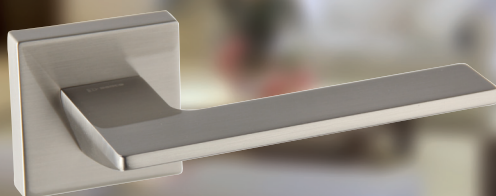
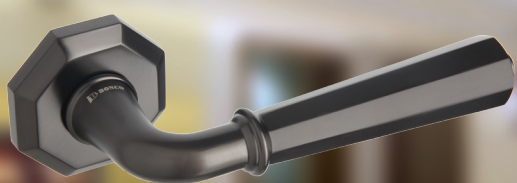


## Lever Handles And Roses



high quality lever handles

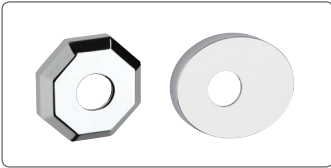


NL802-H .....	LR4	NL-L .....	LR12
NL803-L .....	LR4	NL-M .....	LR12
NL804-K .....	LR4	NL-N .....	LR12
NL805-H .....	LR4	NL-P .....	LR12
NL806-C .....	LR5	NL-Q .....	LR12
NL807-P .....	LR5	NL Escutcheon .....	LR13
NL808-M .....	LR5	NL-AE .....	LR13
NL809-A .....	LR5	NL-CE .....	LR13
NL810-N .....	LR6	NL-HE .....	LR13
NL811-Q .....	LR6	NL-JE .....	LR13
NL812-M .....	LR6	NL-KE .....	LR13
NL813-N .....	LR7	NL-LE .....	LR13
NL814-J .....	LR7	NL-ME .....	LR13
NL815-C .....	LR7	NL-NE .....	LR13
NL816-H .....	LR7	NL-PE .....	LR13
NL817-H .....	LR8	NL-QE .....	LR13
NL818-A .....	LR8	NL Roses Dimensions .....	LR14
NL819-C .....	LR8	5 Series Rose & Cylinder Escutcheon for Set ....	LR15
NL820-H .....	LR9	5 Series Bracket .....	LR16
NL821-K .....	LR9	5 Series Dimensions .....	LR17
NL822-C .....	LR9	5-A .....	LR17
NL Series Dimensions .....	LR10-11	5-AE .....	LR17
NL Roses .....	LR12	5-H .....	LR17
NL-A .....	LR12	5-HE .....	LR17
NL-C .....	LR12	How to Order .....	LR18
NL-H .....	LR12	Installation Instructions .....	LR19-21
NL-J .....	LR12	Information .....	LR22-23
NL-K .....	LR12		



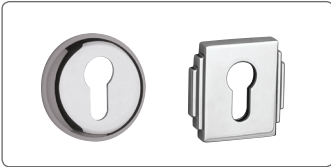
NL Series

LR4-11



Roses

LR12 & LR 14






Escutcheon

LR13



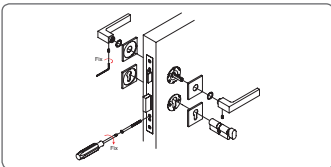
5 Series

LR15-17

Lever Set	Latch	Cylinder	Finish	Door Thickness (D/T)
 NL802-SH-SHE	 4650-60	 46225-D	F21 Bright Chrome	50 50mm

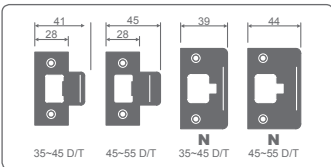
How to Order

LR18



Installation Instructions

LR19-21



Information

LR22-23

## NL SERIES

Standard Finishes:  
F13N, F21, F22,  
F28, F30, F34

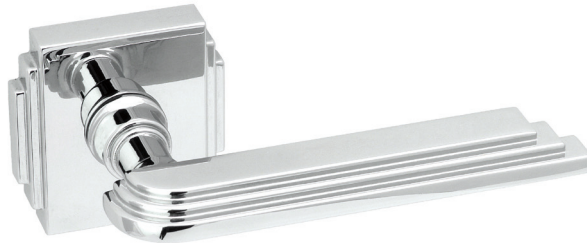
### NL802-H

F34 Brush black chrome



### NL803-L

F21 Bright Chrome



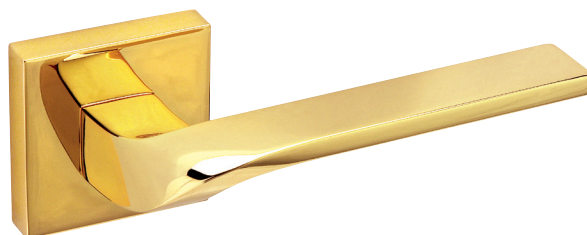
### NL804-K

F22 Stain Nickel



### NL805-H

F13N Bright Gold



**NL806-C**

F30 Black Chrome



**NL807-P**

F22 Satin Nickel



**NL808-M**

F21 Bright Chrome



**NL809-A**

F13N Bright Gold



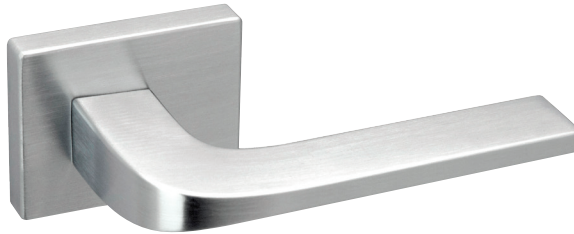
## NL SERIES

**Standard Finishes:**

F13N, F21, F22,  
F28, F30, F34

### NL810-N

F22 Satin Nickel



### NL811-Q

F21 Bright Chrome



### NL812-M

F13N Bright Gold



**NL813-N**

F21 Bright Chrome



**NL814-J**

F22 Satin Nickel



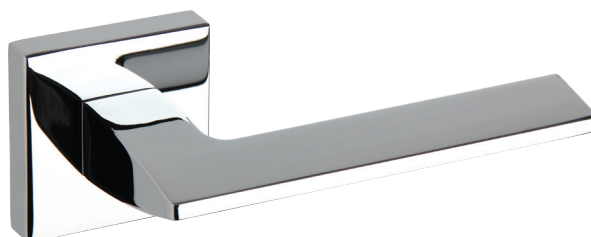
**NL815-C**

F21 Bright Chrome



**NL816-H**

F21 Bright Chrome



## NL SERIES

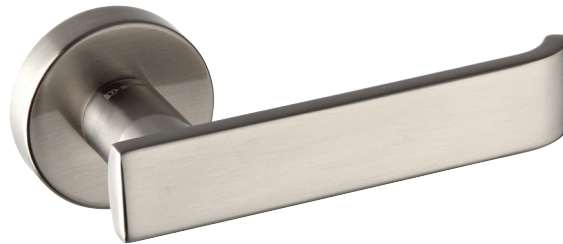
### Standard Finishes:

F13N, F21, F22,  
F28, F30, F34

**NL817-H** **NEW**  
F21 Bright Chrome



**NL818-A** **NEW**  
F22 Satin Nickel

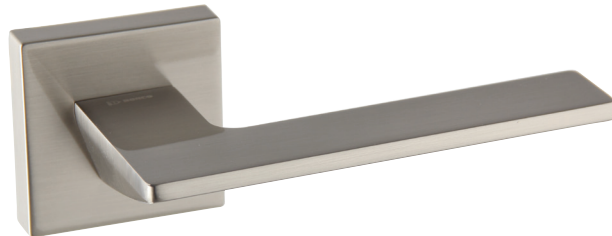


**NL819-C** **NEW**  
F34 Brush Black Chrome





**NL820-H** **NEW**  
F22 Satin Nickel



**NL821-K** **NEW**  
F28 Brush Anthracite With Matt

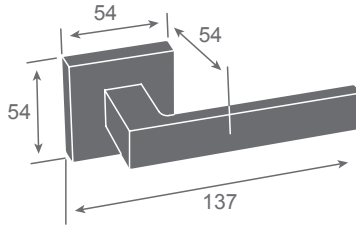


**NL822-C** **NEW**  
F21 Bright Chrome

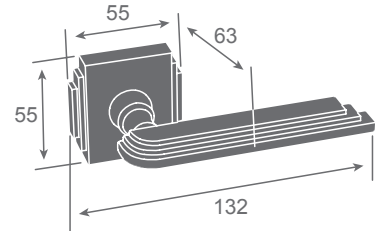


# NL SERIES

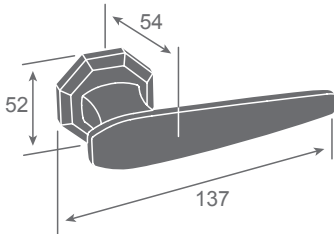
Dimensions  
in millimeters



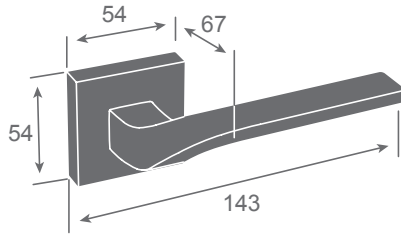
**NL802-H**



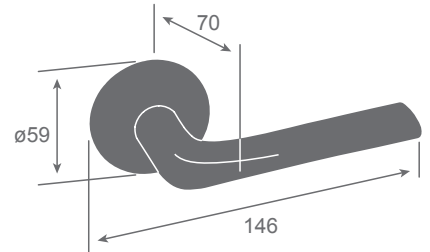
**NL803-L**



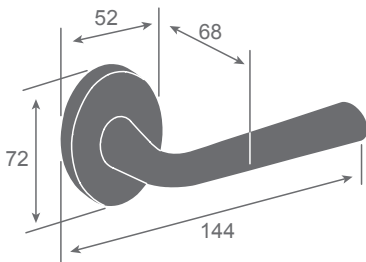
**NL804-K**



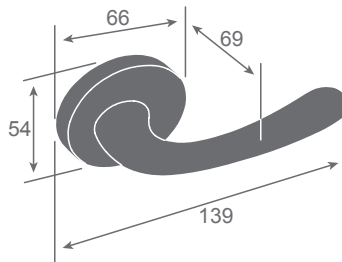
**NL805-H**



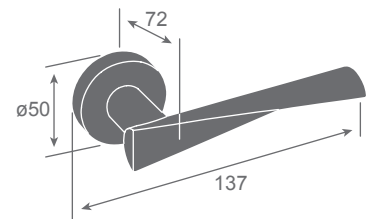
**NL806-C**



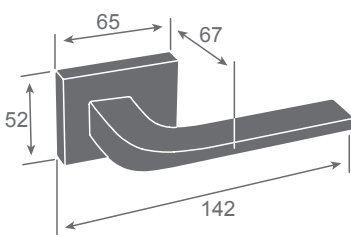
**NL807-P**



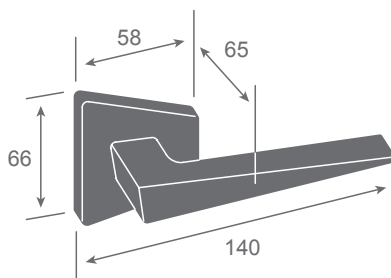
**NL808-M**



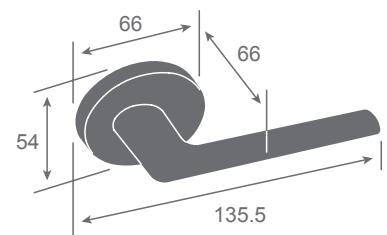
**NL809-A**



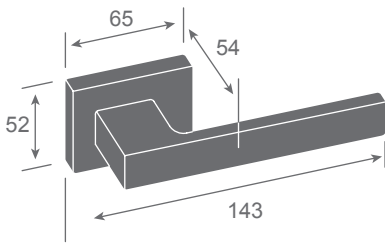
**NL810-N**



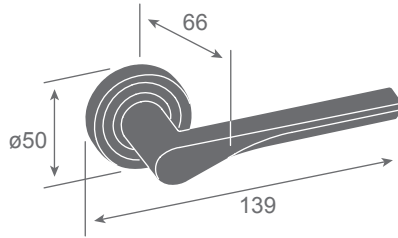
**NL811-Q**



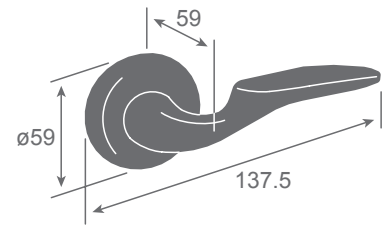
**NL812-M**



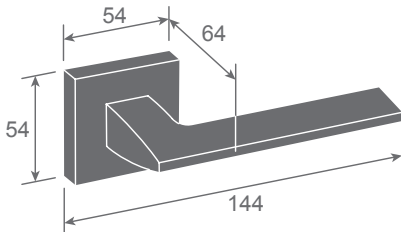
**NL813-N**



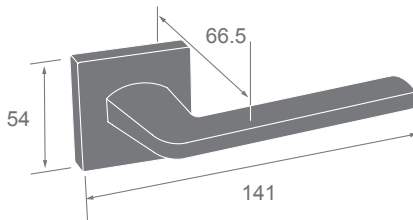
**NL814-J**



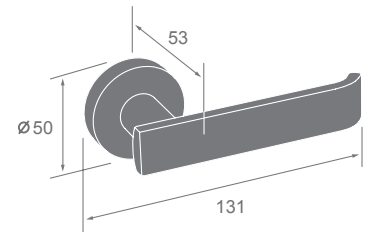
**NL815-C**



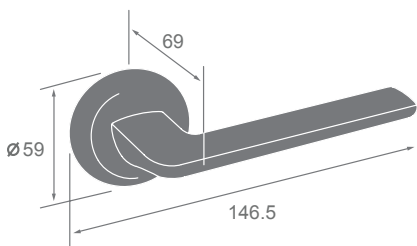
**NL816-H**



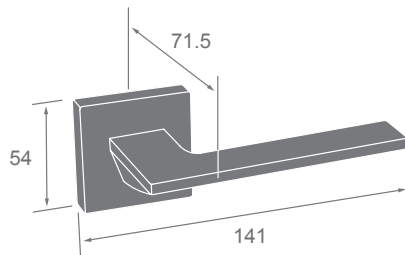
**NL817-H**



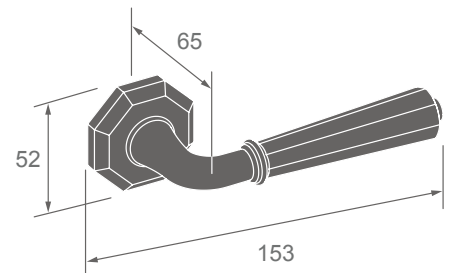
**NL818-A**



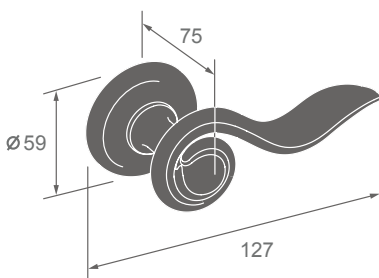
**NL819-C**



**NL820-H**



**NL821-K**



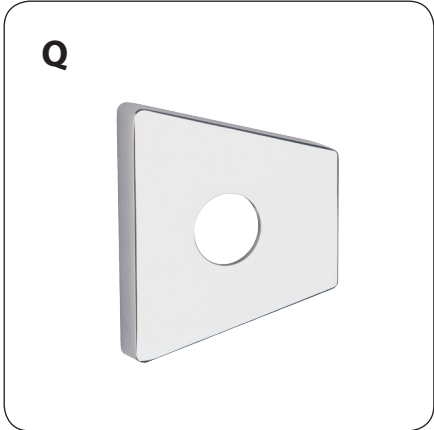
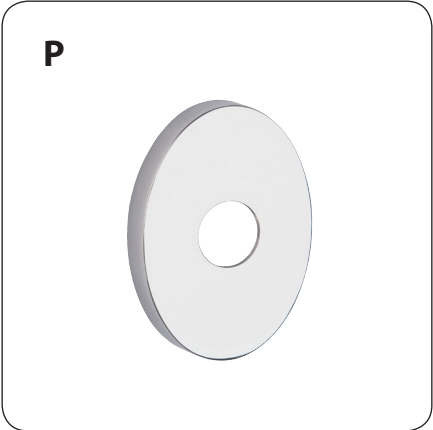
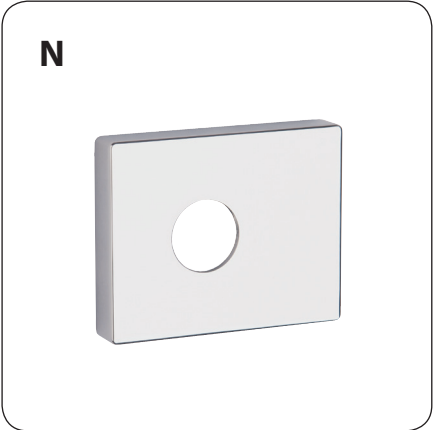
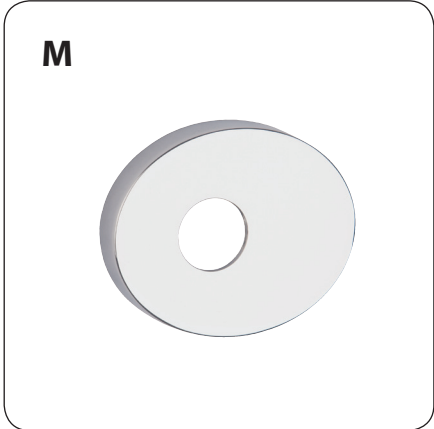
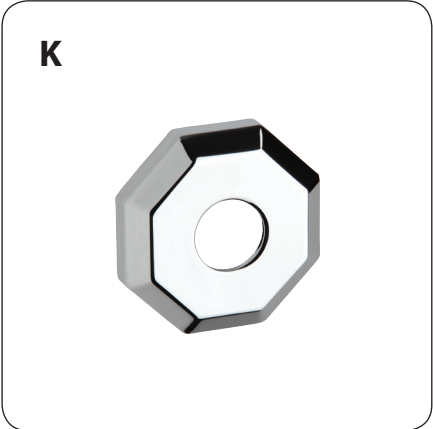
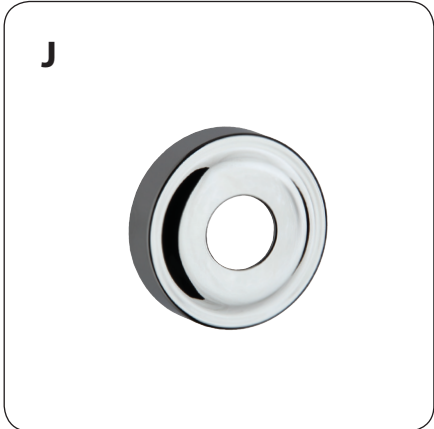
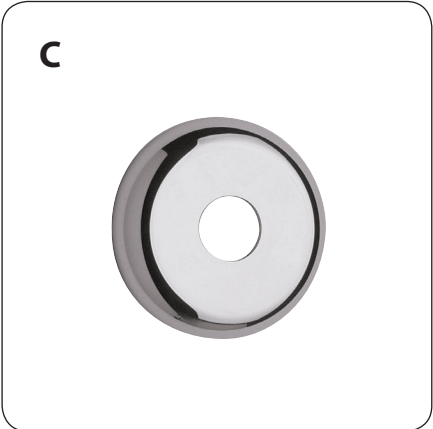
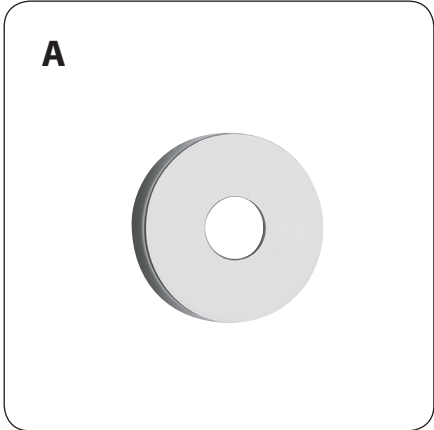
**NL822-C**

# NL ROSE

The trim design to be chosen from Rose design A - Q



Cassette Component



## NL ESCUTCHEON

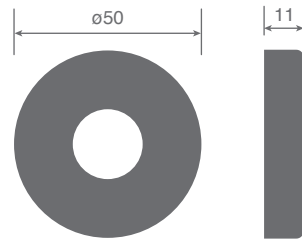
### Cylinder Escutcheon

The trim design to be chosen from Rose design  
AE - QE

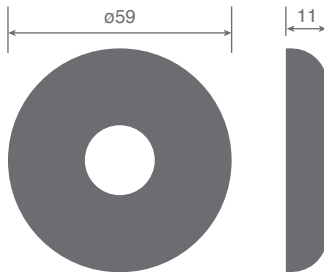
**AE****CE****HE****JE****KE****LE****ME****NE****PE****QE**

# NL ROSE

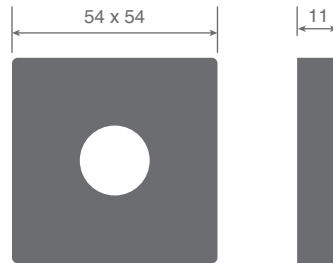
Dimensions  
in millimeters



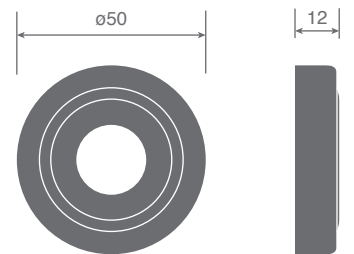
**A**



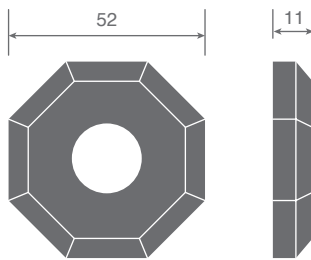
**C**



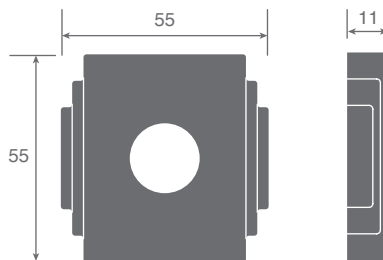
**H**



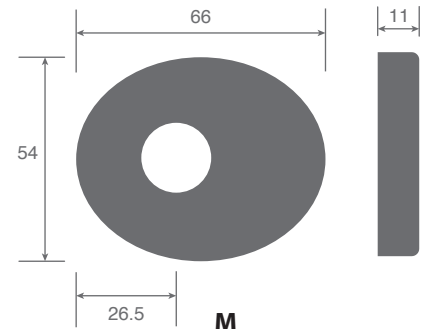
**J**



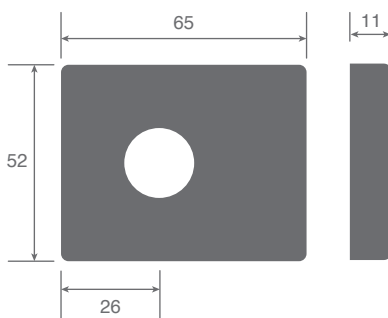
**K**



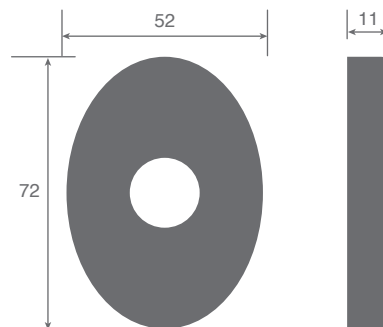
**L**



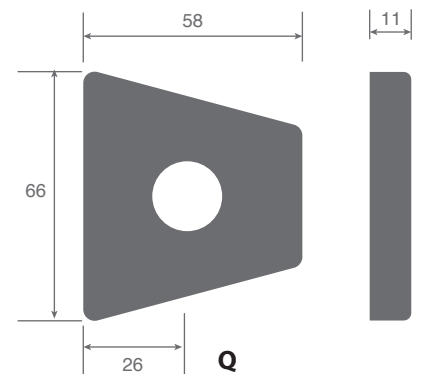
**M**



**N**



**P**

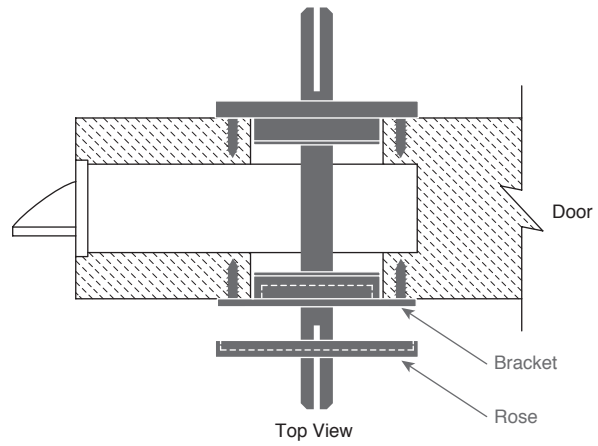


**Q**

# 5 SERIES

Rose & Cylinder  
Escutcheon

Example for set



outside



inside



outside



inside

# 5 SERIES

Rose & Cylinder  
Escutcheon

Rose design A & H

## Bracket



Rose Bracket



Cylinder Escutcheon Bracket

## 5-A Rose Cover



## 5-AE Cylinder Escutcheon Cover



## 5-H Rose Cover



## 5-HE Cylinder Escutcheon Cover

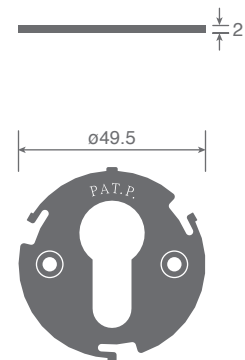
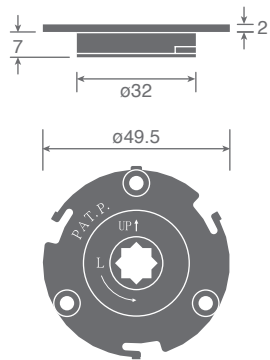




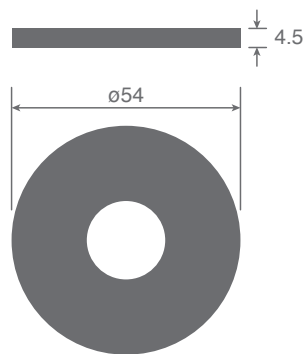
# 5 SERIES

Dimensions  
in millimeters

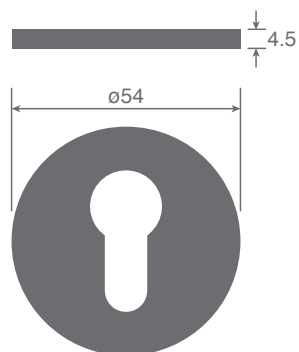
## Bracket



## Rose

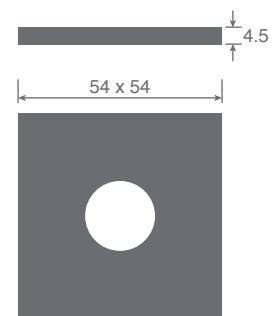


**5-A**

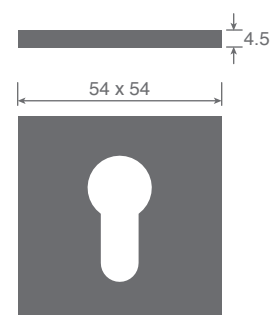


**5-AE**

## Cylinder Escutcheon



**5-H**



**5-HE**

## How to order

### EXAMPLE (1): NL802-5H-5HE-4650-60-4622S-D-F21-50DT

	Lever Set	Latch	Cylinder	Finish	Door Thickness (D/T)
	<b>NL802-5H-5HE</b>	<b>4650-60</b>	<b>4622S-D</b>	<b>F21</b>	<b>50</b>
	 			Bright Chrome	50mm

### EXAMPLE (2): NL808-M-5091SS-60-F21-45DT

	Lever Set	Latch	Backset	Finish	Door Thickness (D/T)
	<b>NL808-M</b>	<b>5091SS</b>	<b>60</b>	<b>F21</b>	<b>45</b>
			60mm	Bright Chrome	45mm

### EXAMPLE (3): NL807-P-CLQ-05-F22-50DT

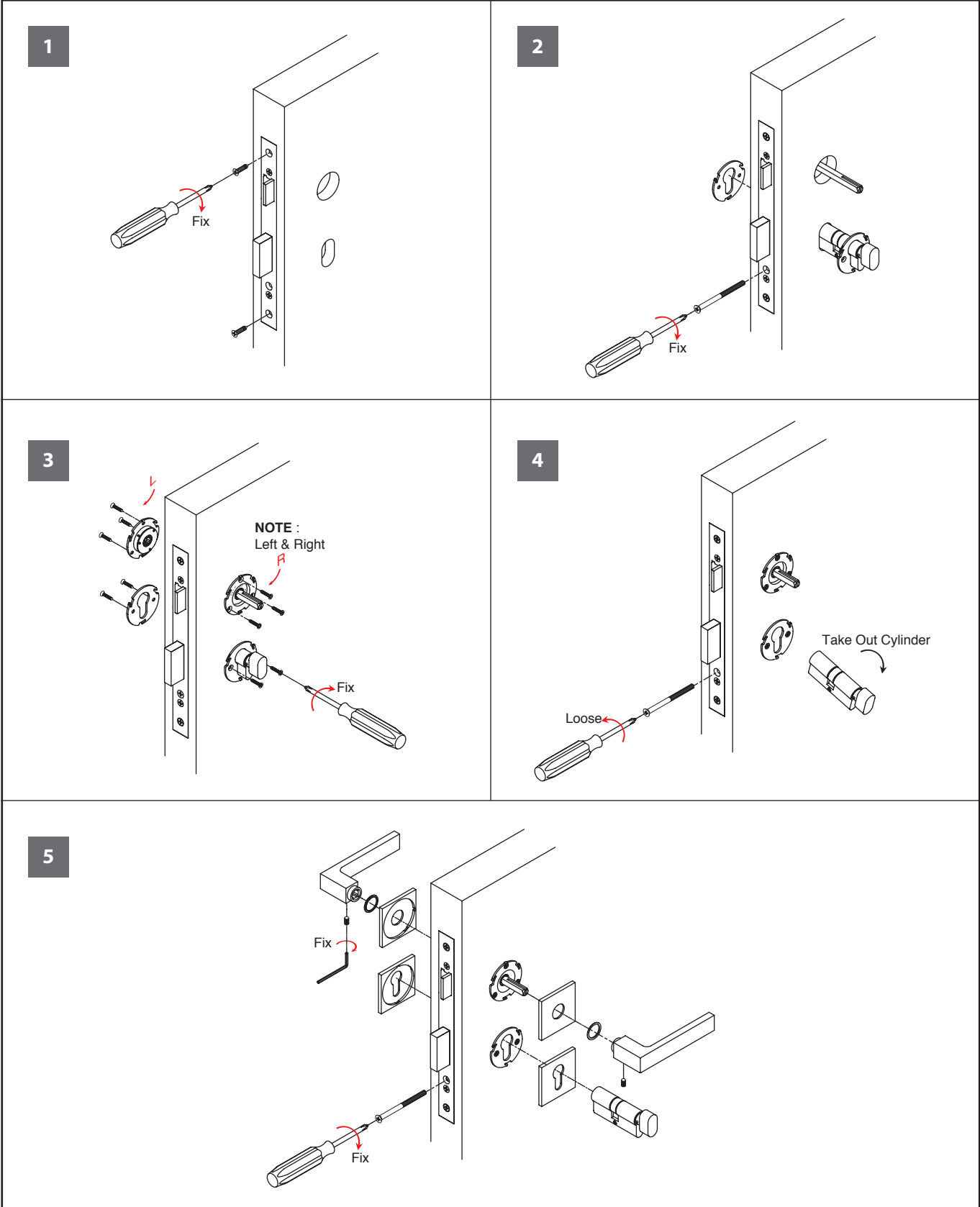
	Lever Set	Lock	Function Number	Finish	Door Thickness (D/T)
	<b>NL807-P</b>	<b>CLQ</b>	<b>05</b>	<b>F22</b>	<b>50</b>
			Entrance	Satin Nickel	50mm

### EXAMPLE (4): NL805-H-HE-4626-70-4622S-A-F13N-55DT

	Lever Set	Lock	Cylinder	Finish	Door Thickness (D/T)
	<b>NL805-H-HE</b>	<b>4626-70</b>	<b>4622S-A</b>	<b>F13N</b>	<b>55</b>
	 			Bright Gold	55mm

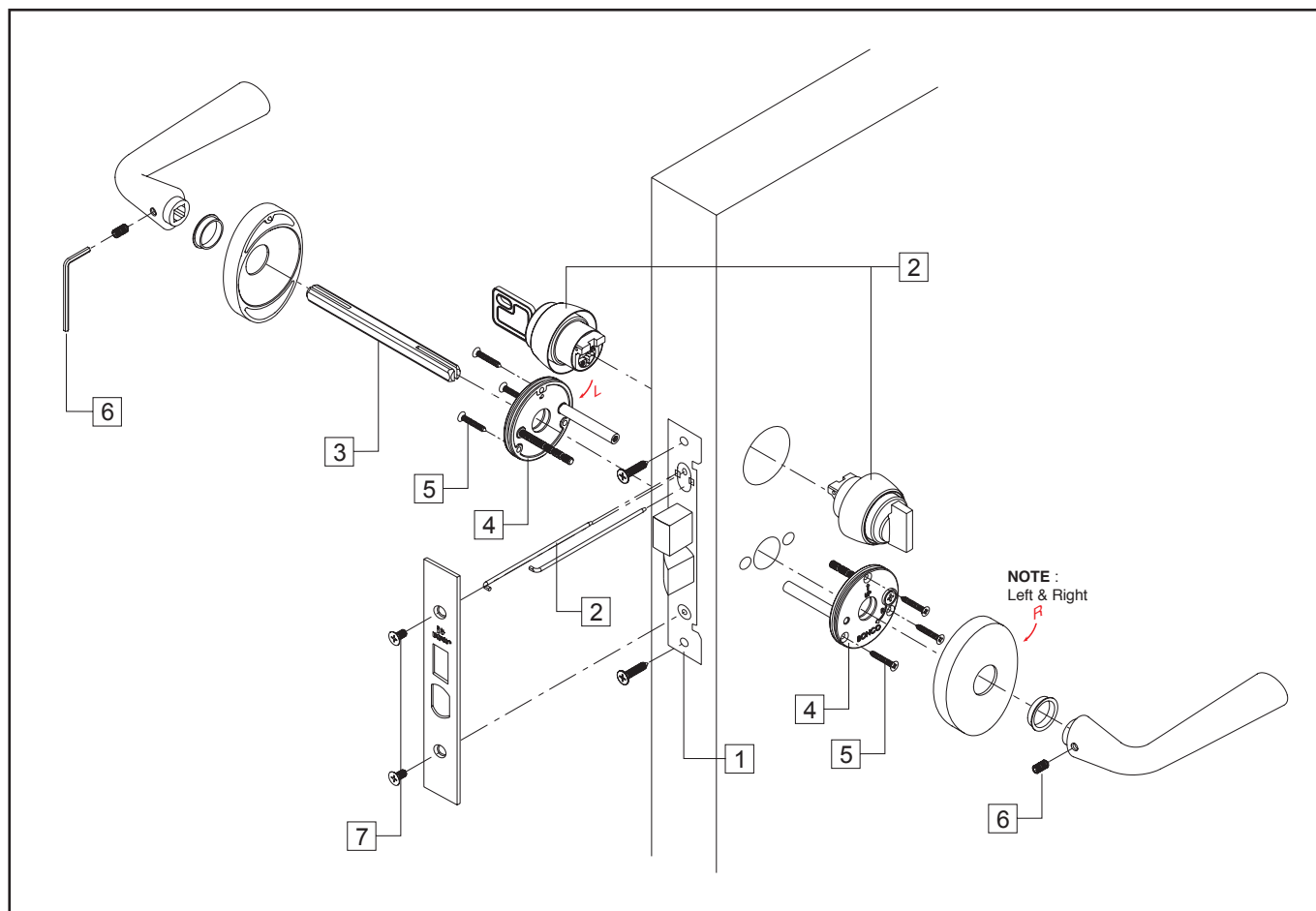
# Installation Instruction

For Example (1)



## Installation Instruction

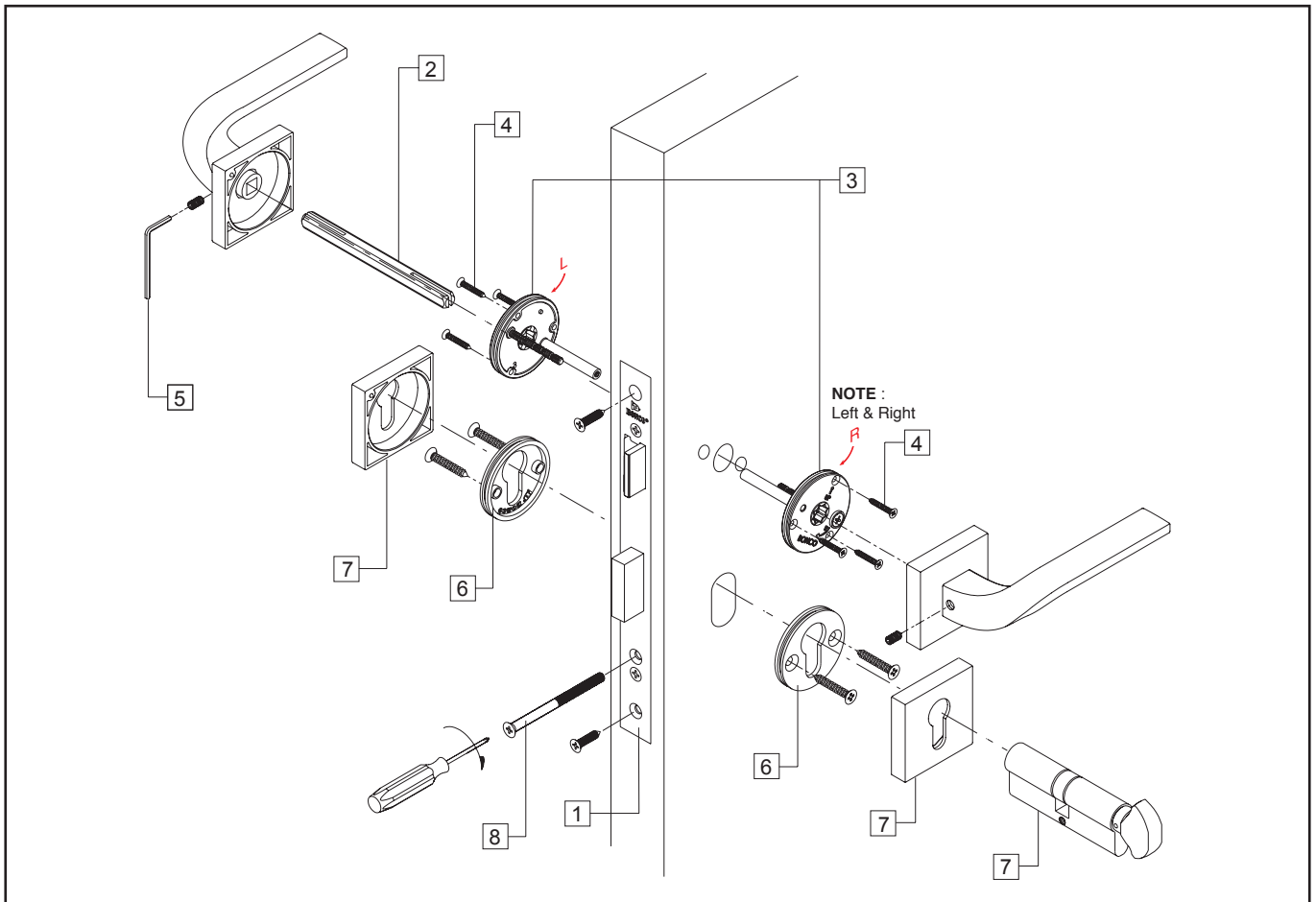
For Example (3)



1. Install the lockcase by inserting it into the cutout of the door.
2. Secure the outside cylinder and inside turn-piece to the lockcase by inserting the long retainer pins from the plate side.
3. Insert the square spindle into the hub.
4. Place the fixing brackets onto the door and fix them by tightening up two sets of (male and female screws) as shown in the diagram.
5. Reinforce and secure the fixing brackets by additional screws.
6. Secure the outside and inside lever to the fixing brackets. Tighten the levers to the square spindle with the little thread screw.
7. Finally, install the armored front.

## Installation Instruction

For Example (4)



1. Install the lockcase by inserting it into the cutout of the door.
2. Insert the square spindle into the hub.
3. Place the fixing brackets onto the door and fix them by tightening up two sets of screws.
4. Reinforce and secure the fixing brackets by additional screws.
5. Secure the outside and inside lever to the fixing brackets. Tighten the levers to the square spindle with the little thread screw.
6. Place the fixing brackets onto the door and fix them by tightening up four screws.
7. Insert the cylinder through the cylinder escutcheons.
8. Finally, install the armored front.

## Information

The Series below are recommended to use with **BONCO** lever handles and rose.

Series	Backset	Door Thickness	Strike Plate	Photo	Splindle
<b>5091/5091N</b> Spring Latch with Nylon	60&70 mm	35~55mm	<p>35~45 D/T    45~55 D/T    N    N 45~55 D/T</p>		AA
<b>5091SS/5091SSN</b> Spring Latch with S/S Latch	60&70 mm	35~55mm	<p>35~45 D/T    45~55 D/T    N    N 45~55 D/T</p>		AA
<b>5091E/5091EN</b> Spring Latch with Zinc Latch	60&70mm	35~55mm	<p>35~45 D/T    45~55 D/T    N    N 45~55 D/T</p>		AA
<b>LL Series</b>	50mm	40~50mm	<p>39 25.5</p>		AA

Series	Backset	Door Thickness	Strike Plate	Photo	Splindle
<b>CL Series</b>	50mm	45~55 mm			AA
<b>CLQ Series</b>	70 mm	45~55 mm			AA
<b>4626 Series</b>	60&70mm	35~55mm			AA
<b>4650 Series</b>	60&70mm	35~55mm			AA
<b>4653 Series</b>	60&70mm	35~55mm			AR



Name of quality & dependability

[www.boncohardware.com](http://www.boncohardware.com)

**BONCO** Ironmongery Ltd.  
Member of E. Bon Holdings Ltd. (HKEx stock code 599)

---

18/F, First Commercial Building, 33 Leighton Rd., Causeway Bay, H.K.  
Tel : (852) 2891 2188 Fax : (852) 2834 2652

